




Priority Populations: Poverty in Maine

Let's Get Real



MHPRC WW Presentation January 13th 2011
Dawn Littlefield, PAN-HW Program Specialist

Definitions

- **Working poor** is a term used to describe **individuals** and **families** who maintain regular employment but remain in relative **poverty** due to low levels of pay and dependent expenses.*
- Workers earning inadequate income as judged by government-established standards of poverty.**

*Wikipedia

**The Foundation for American Communities



Some Stats

- Maine's estimated individual poverty rate in 2008 was 12.6% compared to the estimated 13.1% for the national rate.
- There are continued marked regional differences in the poverty rates with Washington (20%) ranked highest followed by Somerset(18.7%) and Franklin(17.5%). The lowest poverty rates were in York(9.4%) and Sagadahoc(9.8%)
- 2008 estimations of highest proportion of working age population are in Franklin(66.1%), Penobscot(65%), and Cumberland(64.6%)
- Three of the state's four counties with the highest % of elders, Washington(18.6%), Aroostook(18%), and Piscataquis(17.6%) are among the poorest.

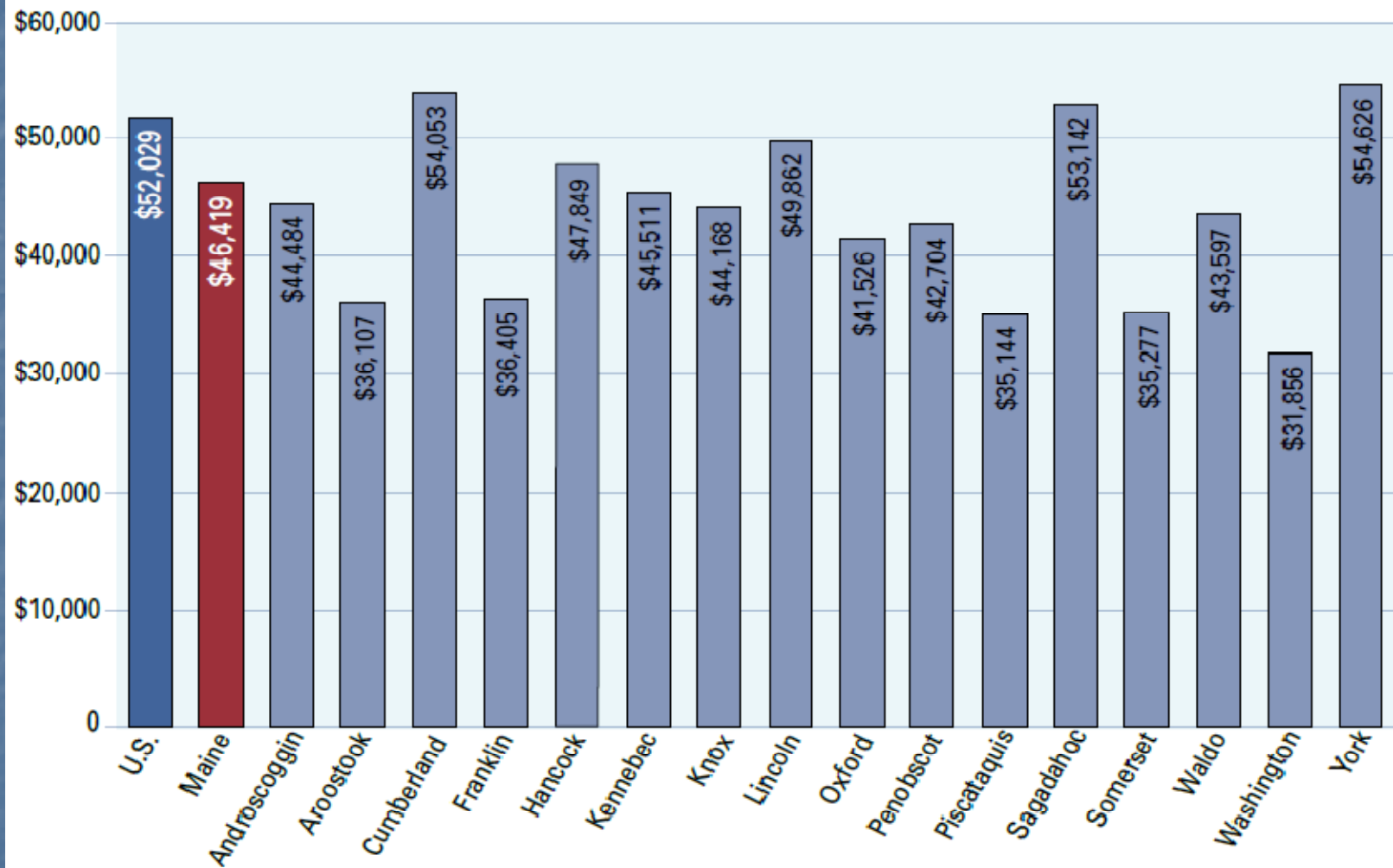


Federal Poverty Guidelines, 2008

Persons in family or household	Percentage Poverty					
	100	125	150	175	185	200
1	\$10,400	\$13,000	\$15,600	\$18,200	\$19,240	\$20,800
2	\$14,000	\$17,500	\$21,000	\$24,500	\$25,900	\$28,000
3	\$17,600	\$22,000	\$26,400	\$30,800	\$32,560	\$35,200
4	\$21,200	\$26,500	\$31,800	\$37,100	\$39,220	\$42,400
5	\$24,800	\$31,000	\$37,200	\$43,400	\$45,880	\$49,600
6	\$28,400	\$35,500	\$42,600	\$49,700	\$52,540	\$56,800
7	\$32,000	\$40,000	\$48,000	\$56,000	\$59,200	\$64,000
8	\$35,600	\$44,500	\$53,400	\$62,300	\$65,860	\$71,200

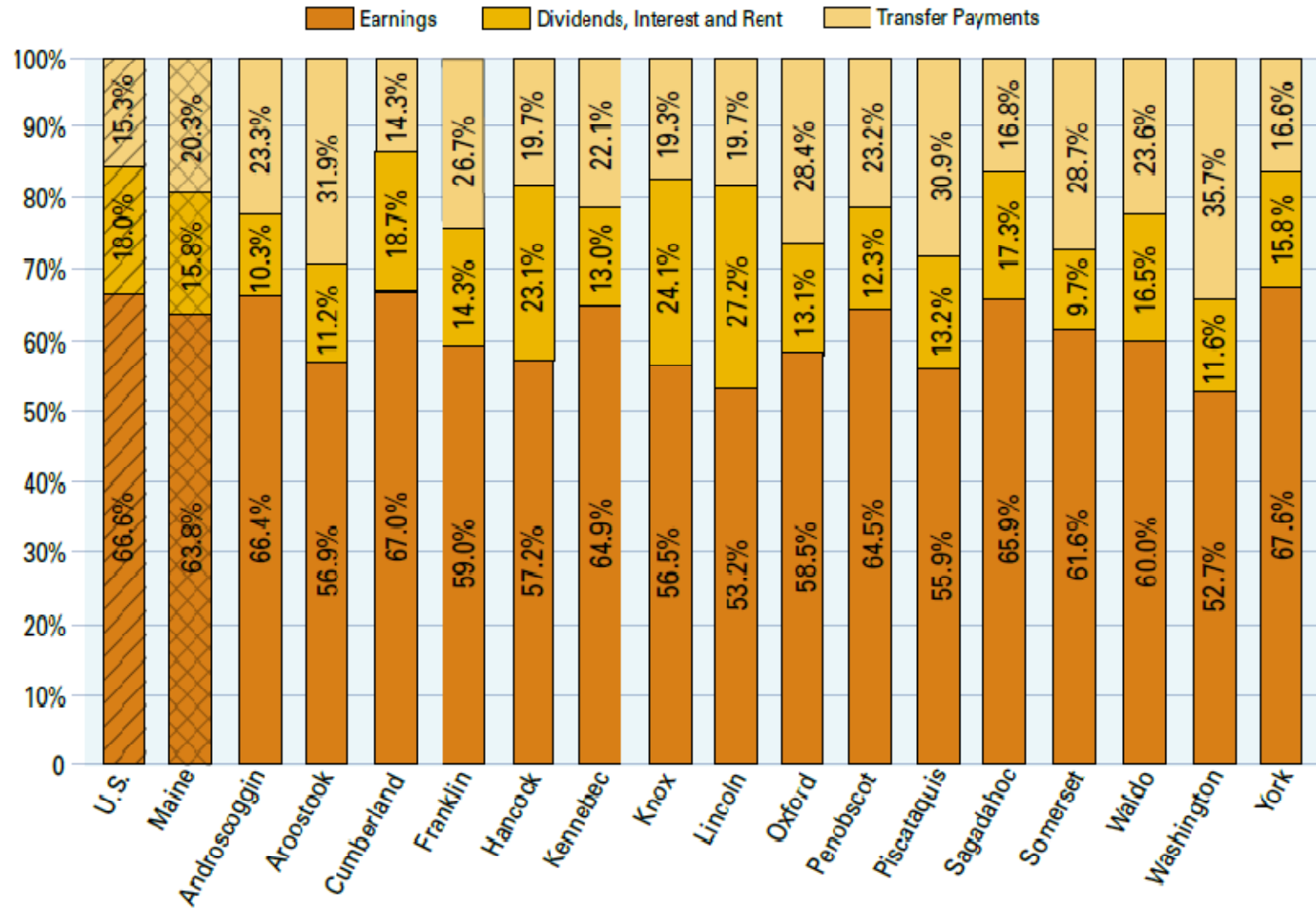
Source: U.S. Department of Health and Human Services

Median Household Income: United States, Maine and Maine Counties, 2008



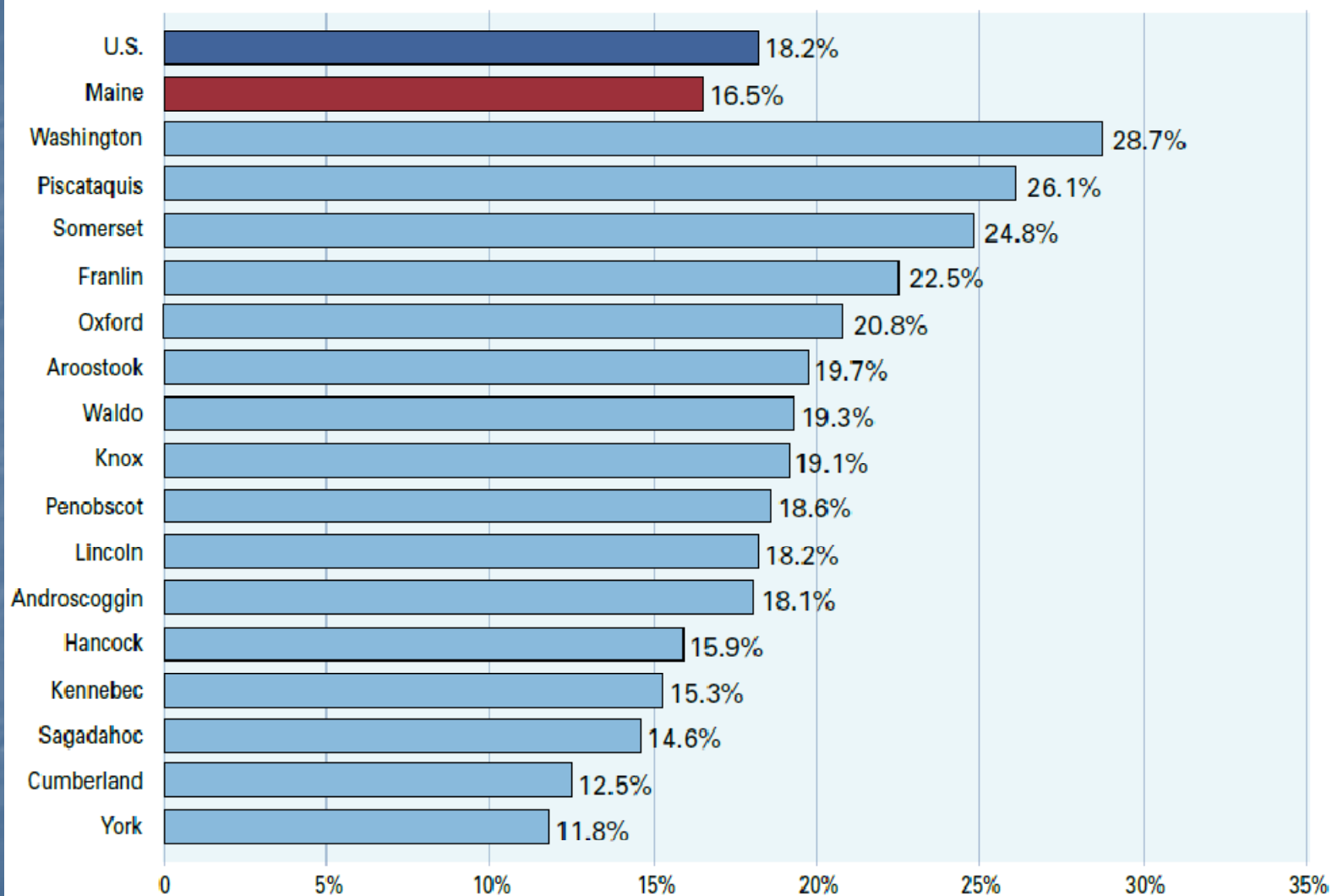
Source: U.S. Census Small Area Income and Poverty Rate Estimates (SAIPE)

Personal Income by Source: United States, Maine and Maine Counties, 2008



Source: Calculated from U.S. Bureau of Economic Analysis Regional Economic Information System (REIS)

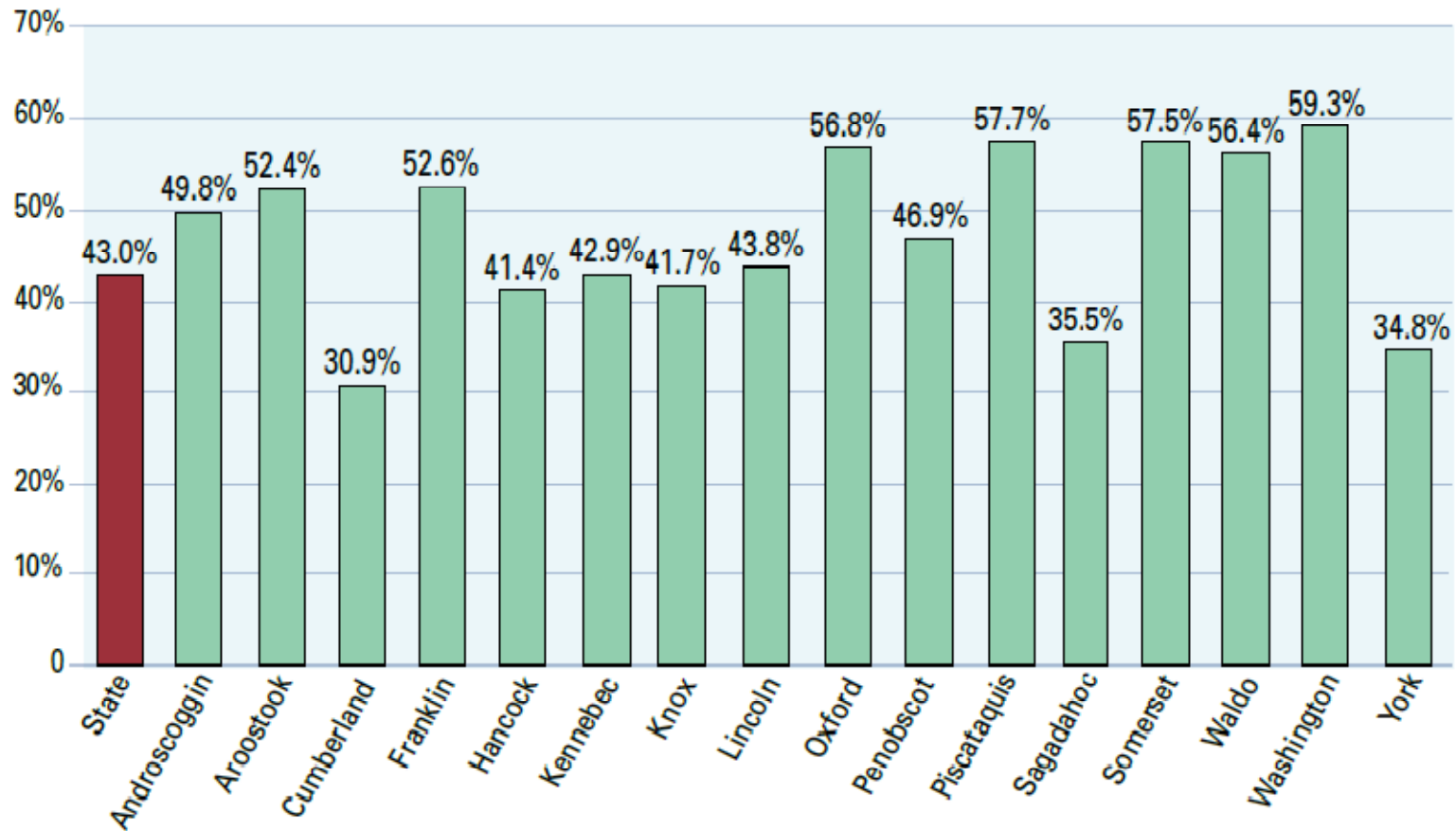
Age 0–17 in Poverty: United States, Maine and Maine Counties, 2008



Source: U.S. Census Small Area Income and Poverty Estimates (SAIPE)

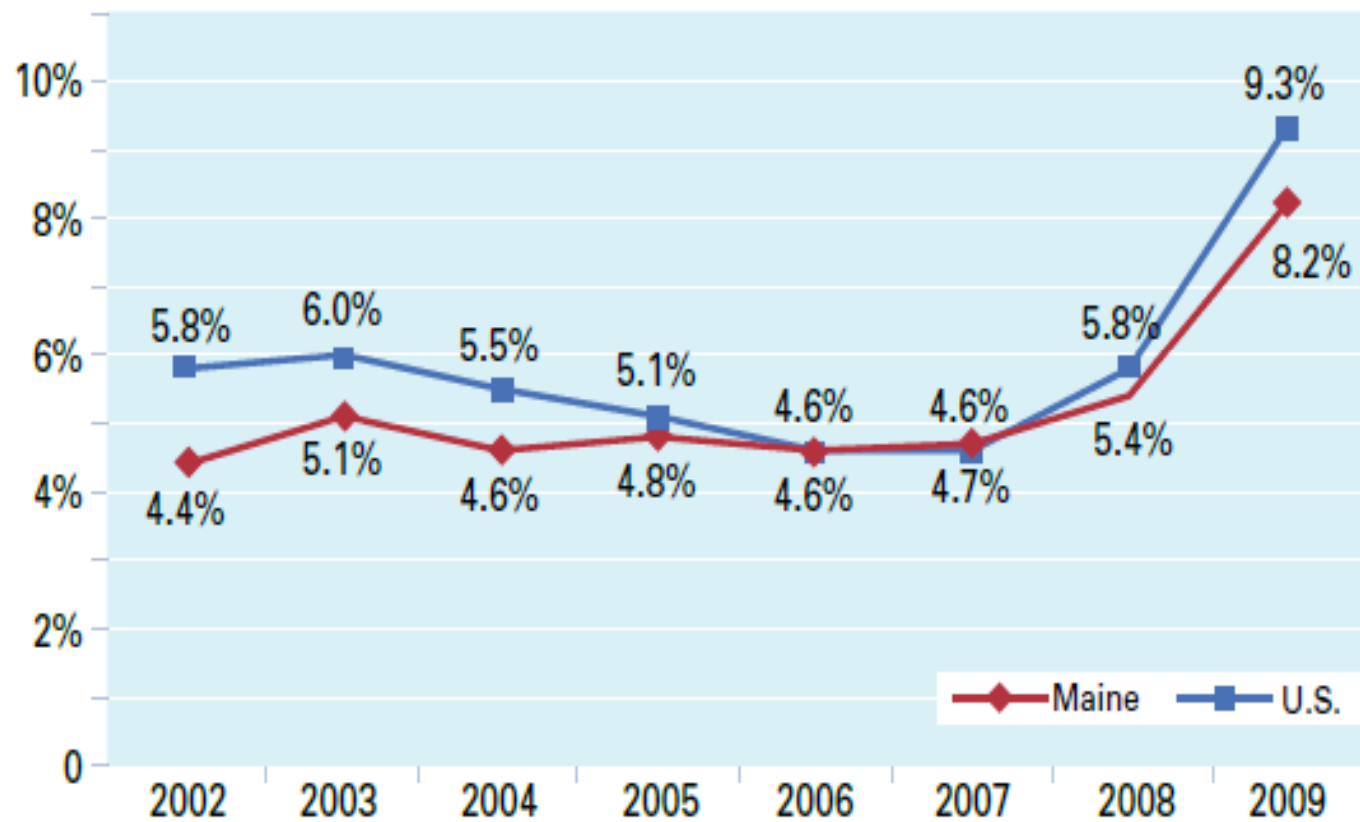
FIGURE 13:

Percentage of Enrolled Students in Maine Eligible for
Free or Reduced Lunch, October 1, 2009



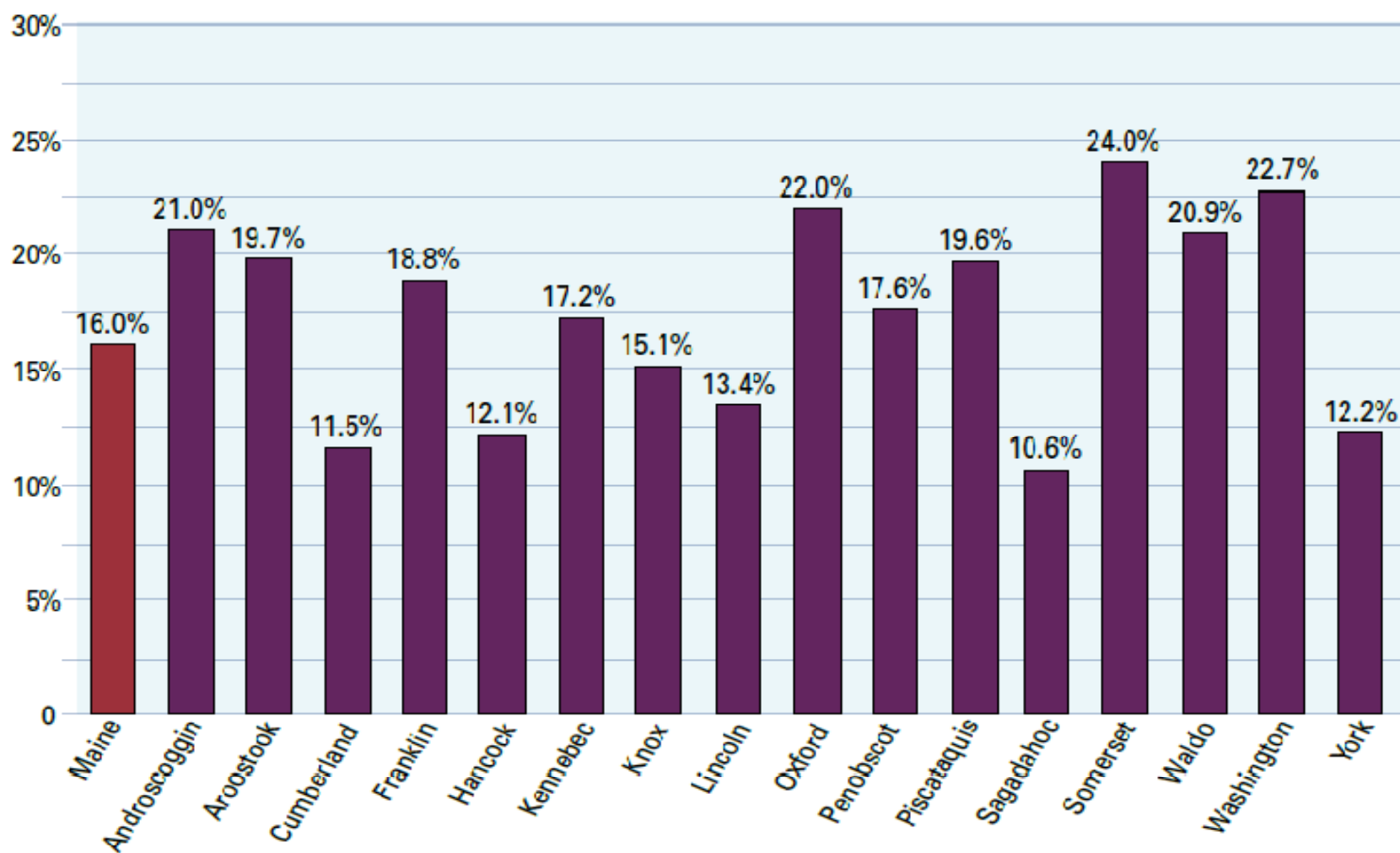
Source: Maine Department of Education

Unemployment Rates: Maine and the United States, 2002–2009



Source: Maine Department of Labor

FIGURE 6:
Percentage of Maine Population Participating in Supplemental
Nutrition Assistance Program (Monthly Average), FY2008–09



Source: Average calculated from DHHS monthly report, Geographic Distribution of Programs and Benefits, (RE-PM001)

Discussion/Conclusions

- How does this effect the workforce?
- Maine's business climate?
- The small and large scales of economy?
- Possible solutions? What already exists?



Thanks for your time!

Dawn Littlefield, PAN-HW program

dawn.littlefield@maine.gov

287-6393

- Poverty in Maine 2010 document and information can be found at www.mainecommunityaction.org/ or at <http://www.umaine.edu/mscs/>