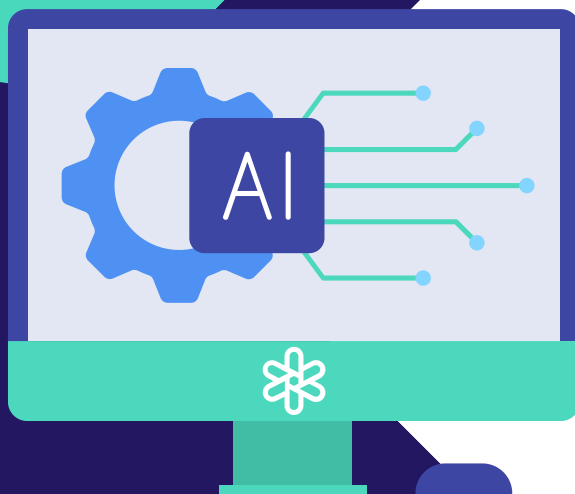


Green Office Pledge for Responsible Use of AI



Artificial Intelligence is powerful, but comes at a cost, environmentally, due to its power-hungry nature. We must remain mindful of these impacts while embracing the new technology.

Co2

Carbon Footprint

A typical ChatGPT query uses **several time more** energy (and emits more CO₂) than a simple Google search. While a Google search might emit ~ 0.2g CO₂, a ChatGPT query might emit around 3-5g for more complex prompts.



AI Mindfulness

1

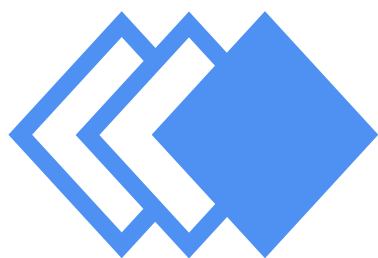
Use judiciously

Do you need AI to accomplish your task? If so, treat AI like other resources, like paper or electricity. Ask for what you really need and keep prompts clear and concise.



Batch your requests

2



Instead of asking several small questions in separate chats, group them together to save computing power.

3

Prefer efficient models

If your AI tool offers a "fast" or "light" option (like GPT-3.5 in ChatGPT, or "balanced" mode in Copilot), choose that for everyday tasks and save the "advanced" models for complex work.



Choose the right tool

4



For quick spelling, math or fact lookups, use built-in programs or search tools, rather than AI.

5

Use AI for good!

Put AI to work on sustainability goals, such as reducing waste, analyzing energy use, or finding eco-friendly alternatives.



Please have all team members participating in the Green Office Program, review these points and agree to responsible use of AI.