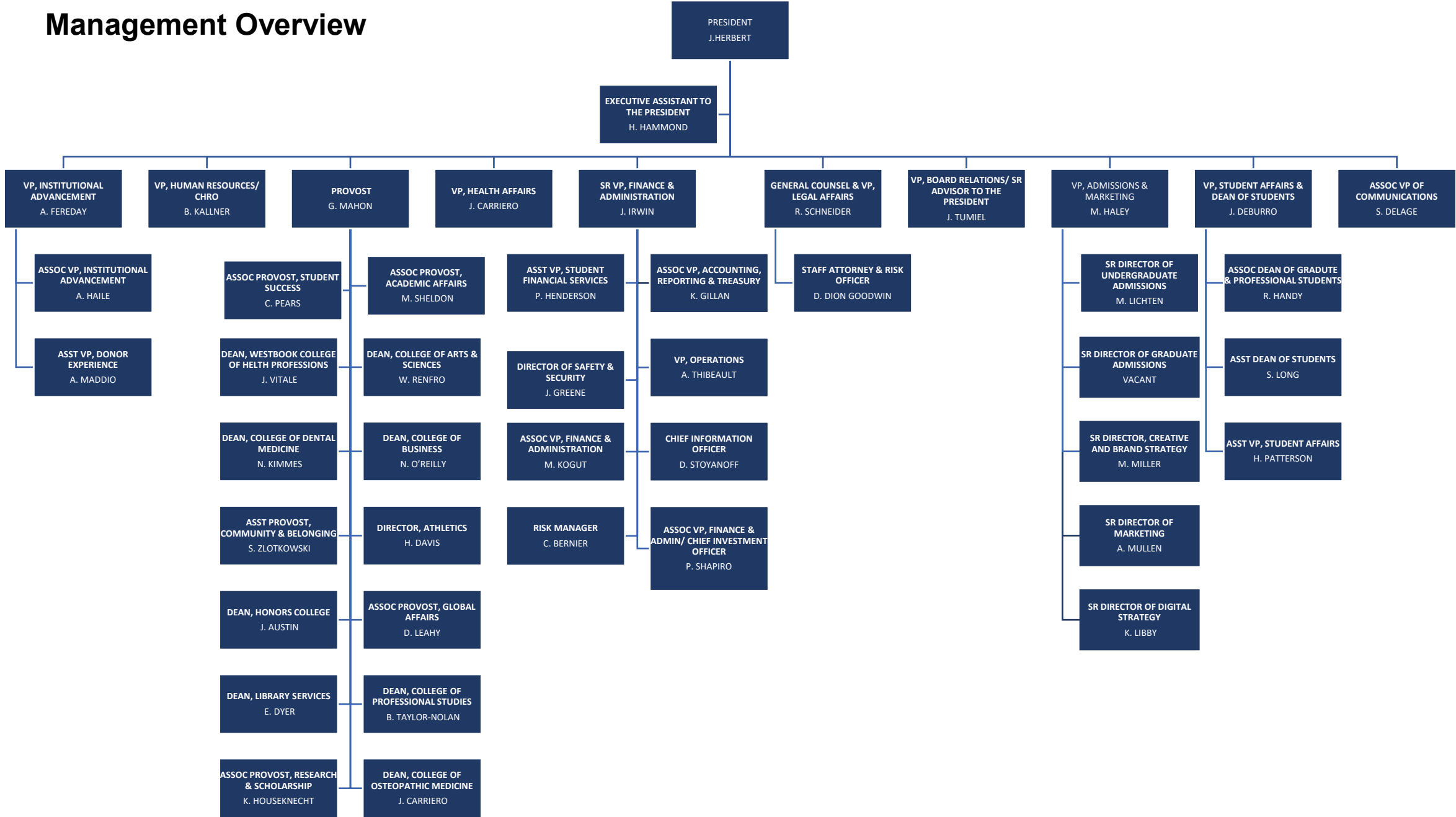
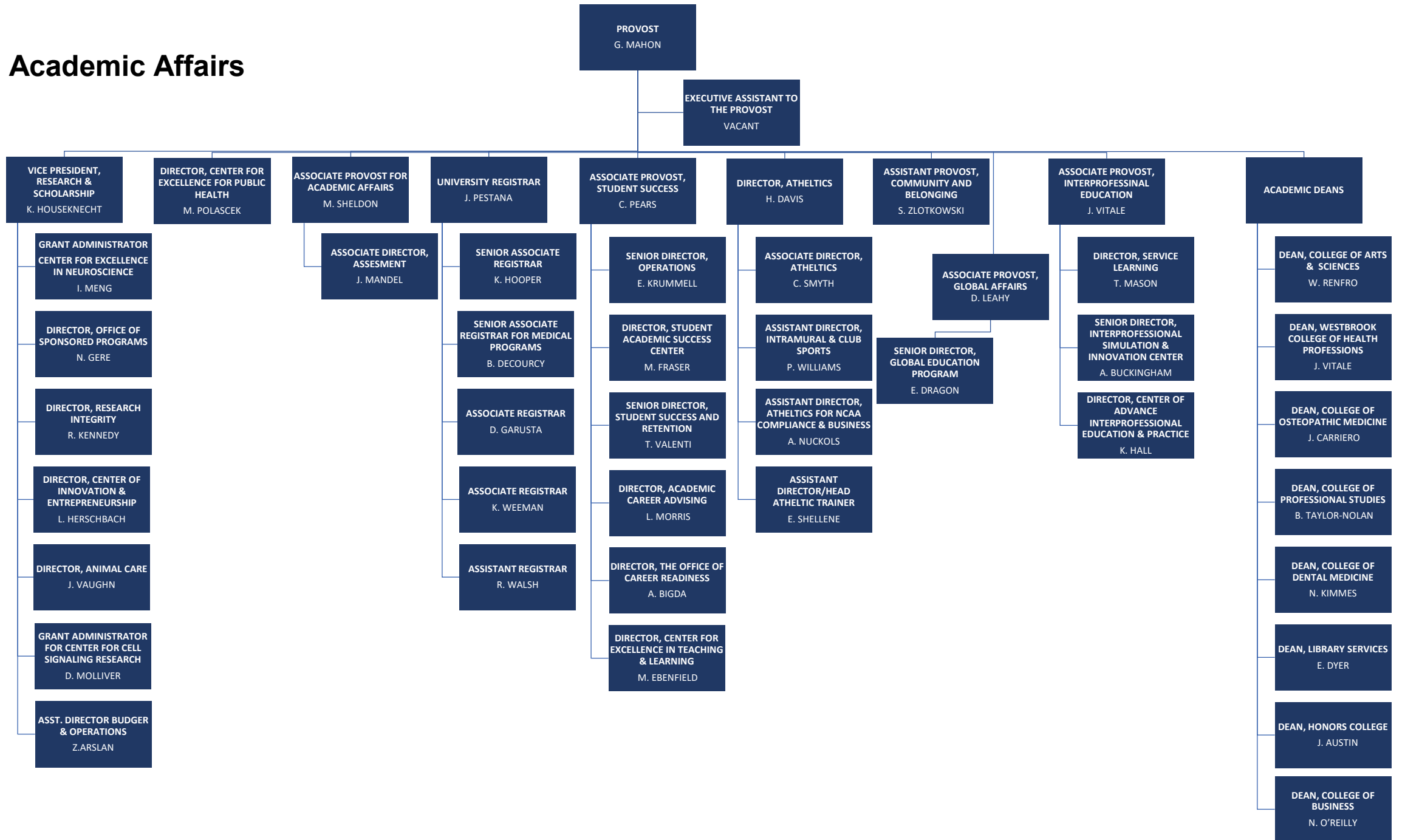


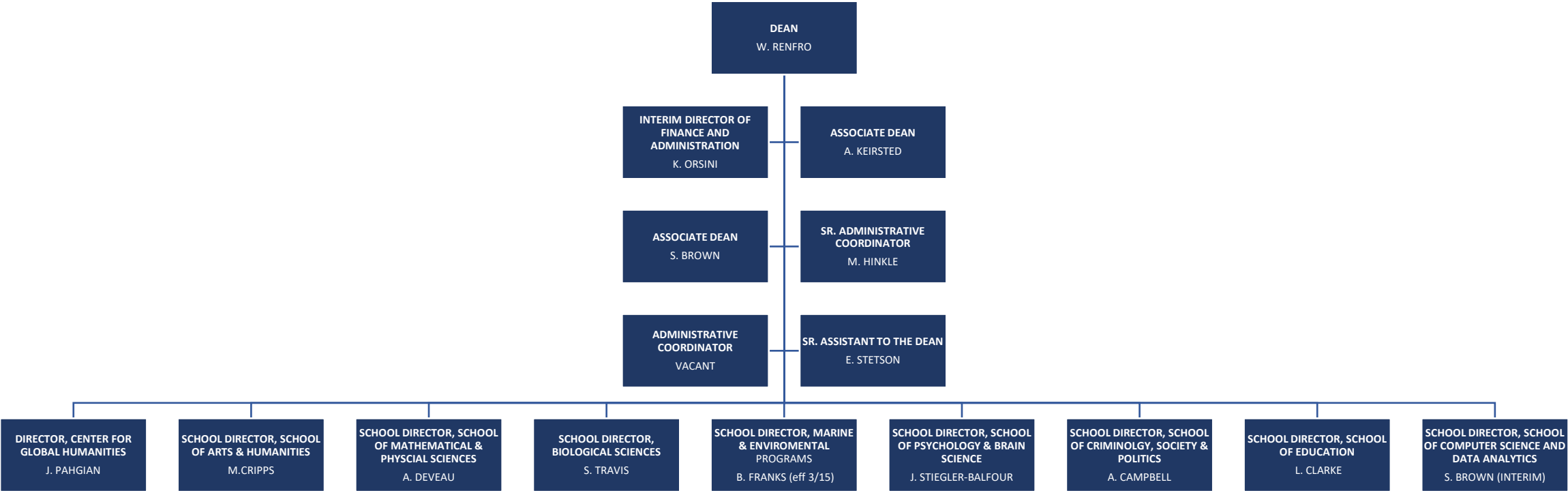
Management Overview



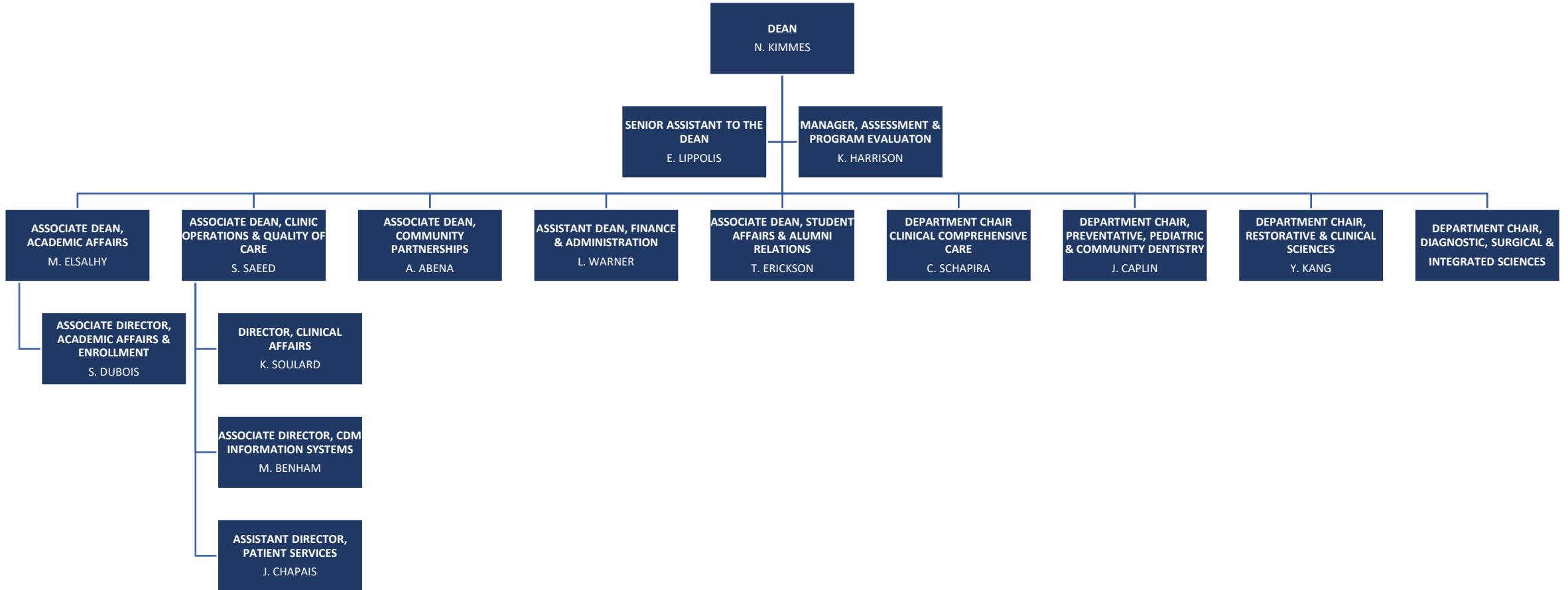
Academic Affairs



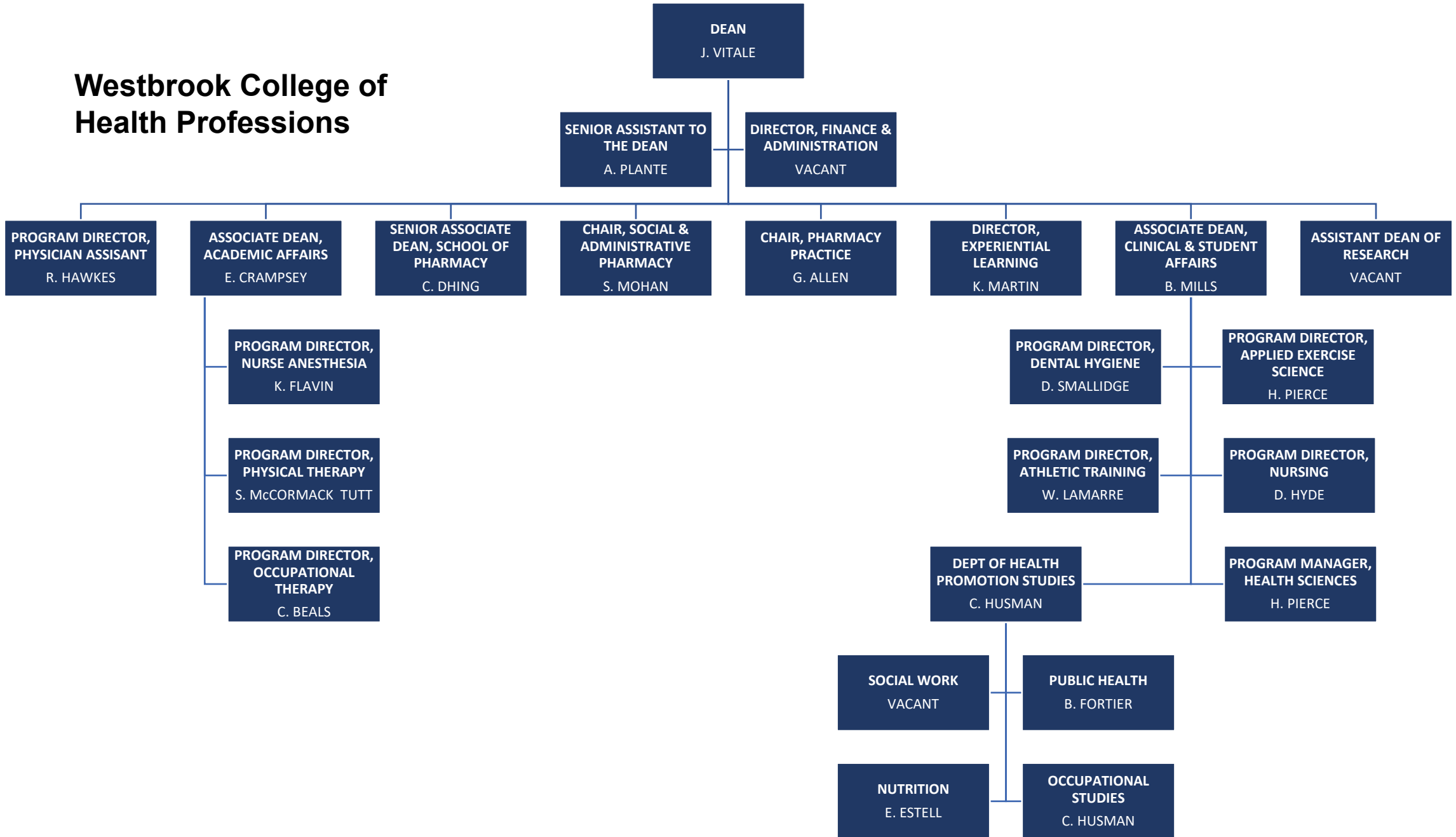
College of Arts & Sciences



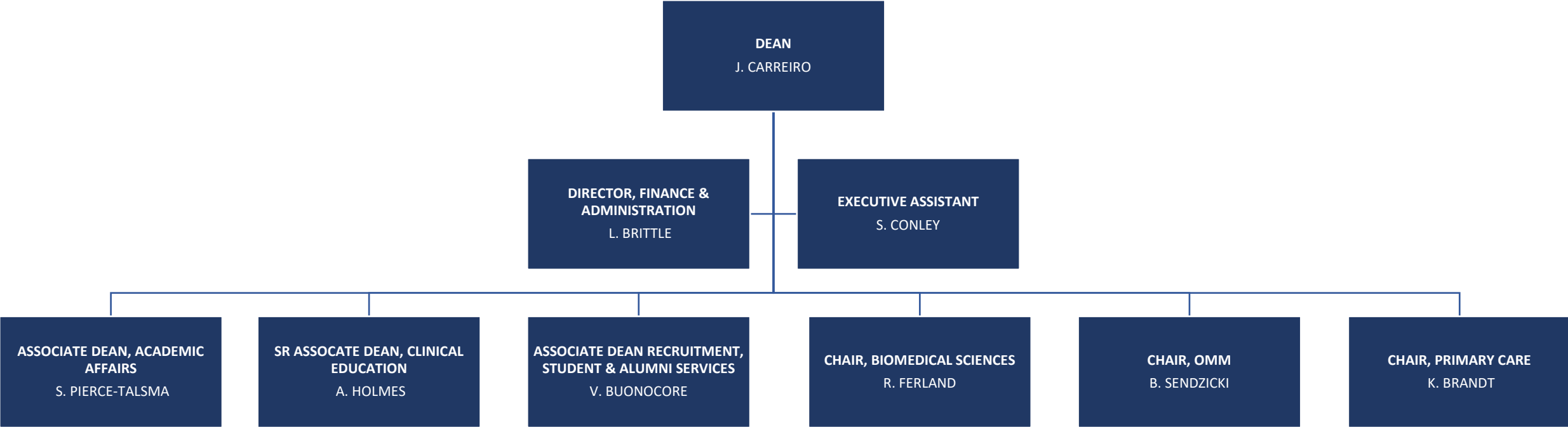
College of Dental Medicine



Westbrook College of Health Professions



College of Osteopathic Medicine



College of Professional Studies

DEAN
B. TAYLOR-NOLAN

SR. ASSISTANT TO THE DEAN &
FINANCIAL COORDINATOR
C. ZIMBA

ASSOCIATE DEAN OF
ACADEMIC AFFAIRS/
DIRECTOR, SCHOOL OF
SOCIAL WORK & GRADUATE
PROGRAMS IN SOCIAL
WORK ONLINE
J. O'NEIL

CO-DIRECTOR, GRADUATE
PROGRAM IN APPLIED
NUTRITION
E. GRANT

CO-DIRECTOR, GRADUATE
PROGRAM IN APPLIED
NUTRITION
G. VIOLETTE-HILL

DIRECTOR, DOCTOR OF
CLINICAL NUTRITION
PROGRAM
E. DODGE

DIRECTOR, GRADUATE
PROGRAMS IN PUBLIC
HEALTH
C. EWAN WHYTE

DIRECTOR, GRADUATE
PROGRAMS IN EDUCATION
A. HARRINGTON

DIRECTOR, INSTRUCTIONAL
DESIGN SERVICES
O. SLASTEN-LAPLANTE

SENIOR DIRECTOR,
PROGRAM OPERATIONS
A. WELCH

ASSOCIATE DEAN,
ADMINISTRATON &
ASSISTANT VP OF EXTERNAL
RELATIONS
E. CERVONE

DIRECTOR, PRACTICUM
EDUCATION, GRADUATE
PROGRAMS IN SOCIAL
WORK
R.DIGGINS

ASSISTANT DIRECTOR,
PUBLIC HEALTH PRACTICE
K. STEWART

ASSISTANT DIRECTOR,
GRADUATE PROGRAMS IN
EDUCATION
J. ASDOURIAN

ACADEMIC PROGRAM
MANAGER
M. DALTON

ACADEMIC PROGRAM
MANAGER
M. KASPRZAK

ACADEMIC PROGRAM
MANAGER
T. MATZ

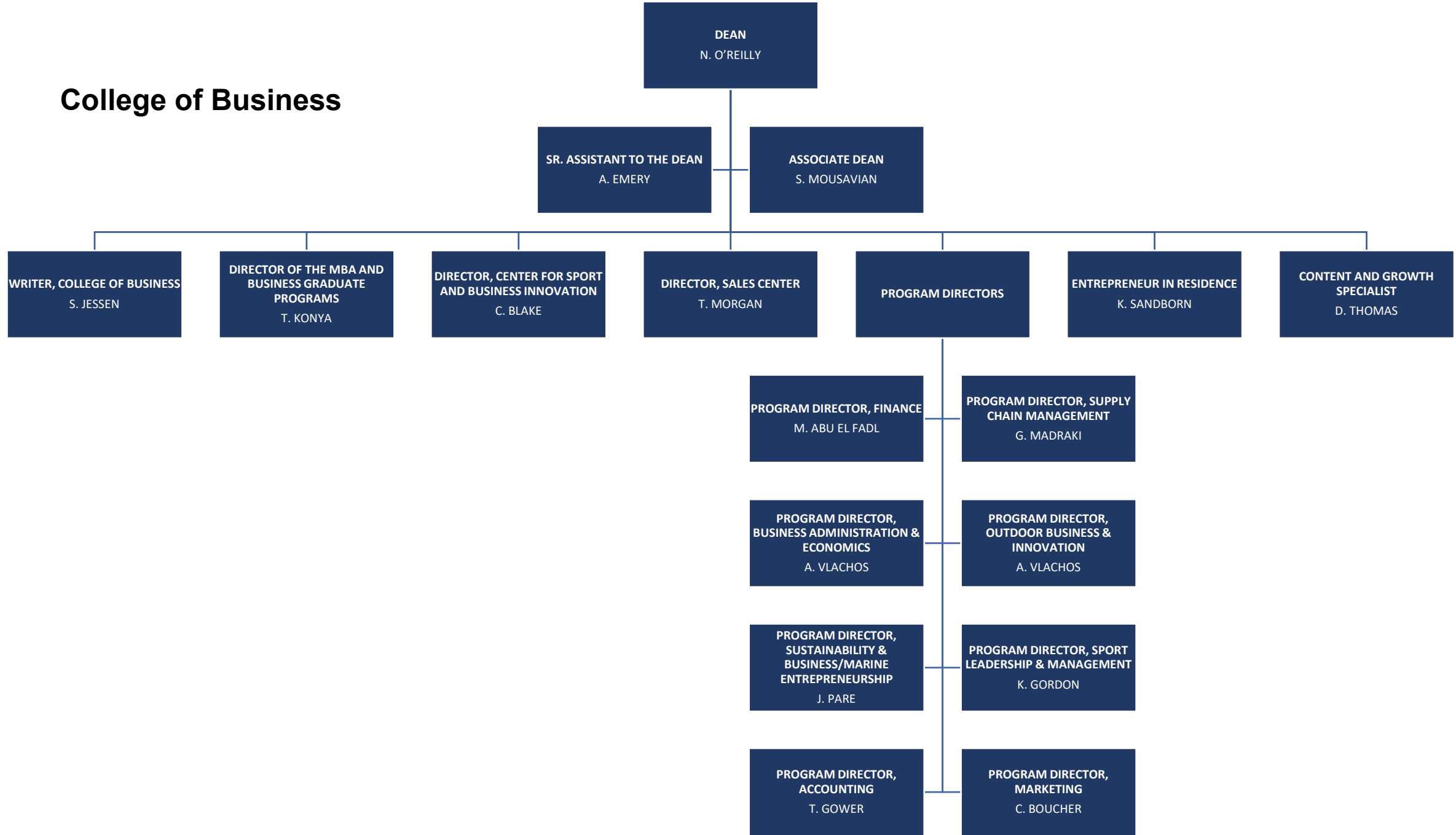
ACADEMIC PROGRAM
MANAGER
P. ANDERSEN

ACADEMIC PROGRAM
MANAGER
S. MEARS

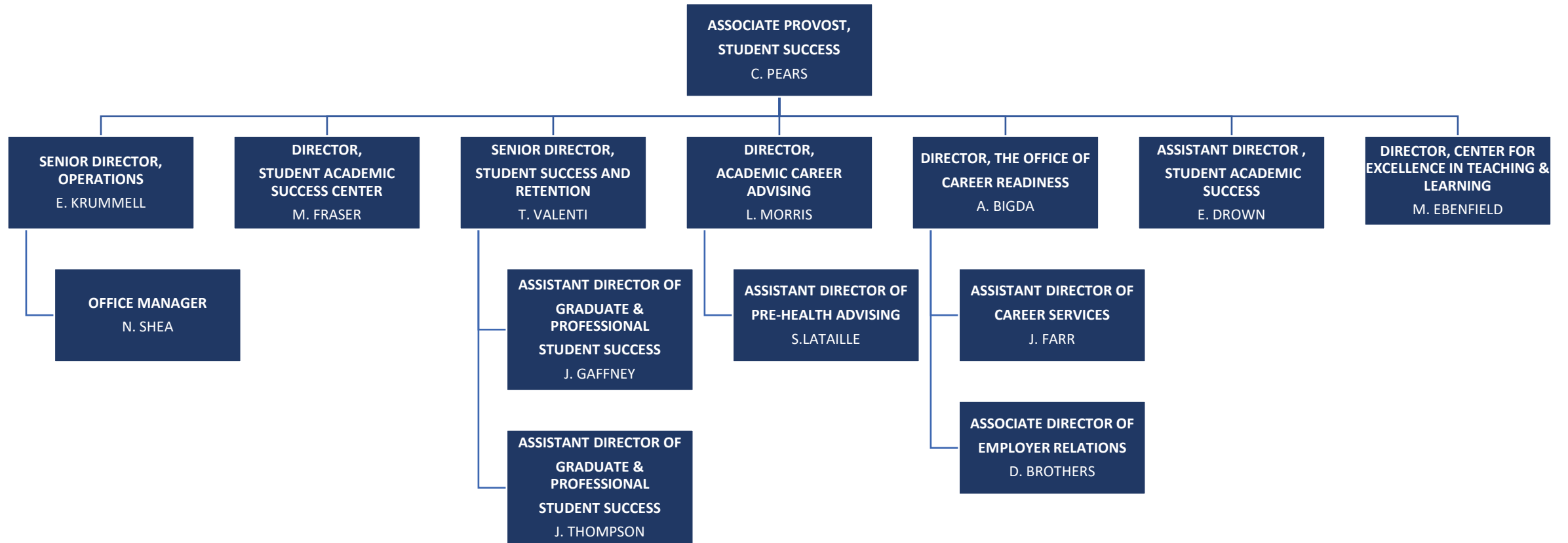
ACADEMIC PROGRAM
MANAGER
G. GILROY

SENIOR TECHNOLOGY AND
SYSTEMS PROJECT
MANAGER
C. MEJIA

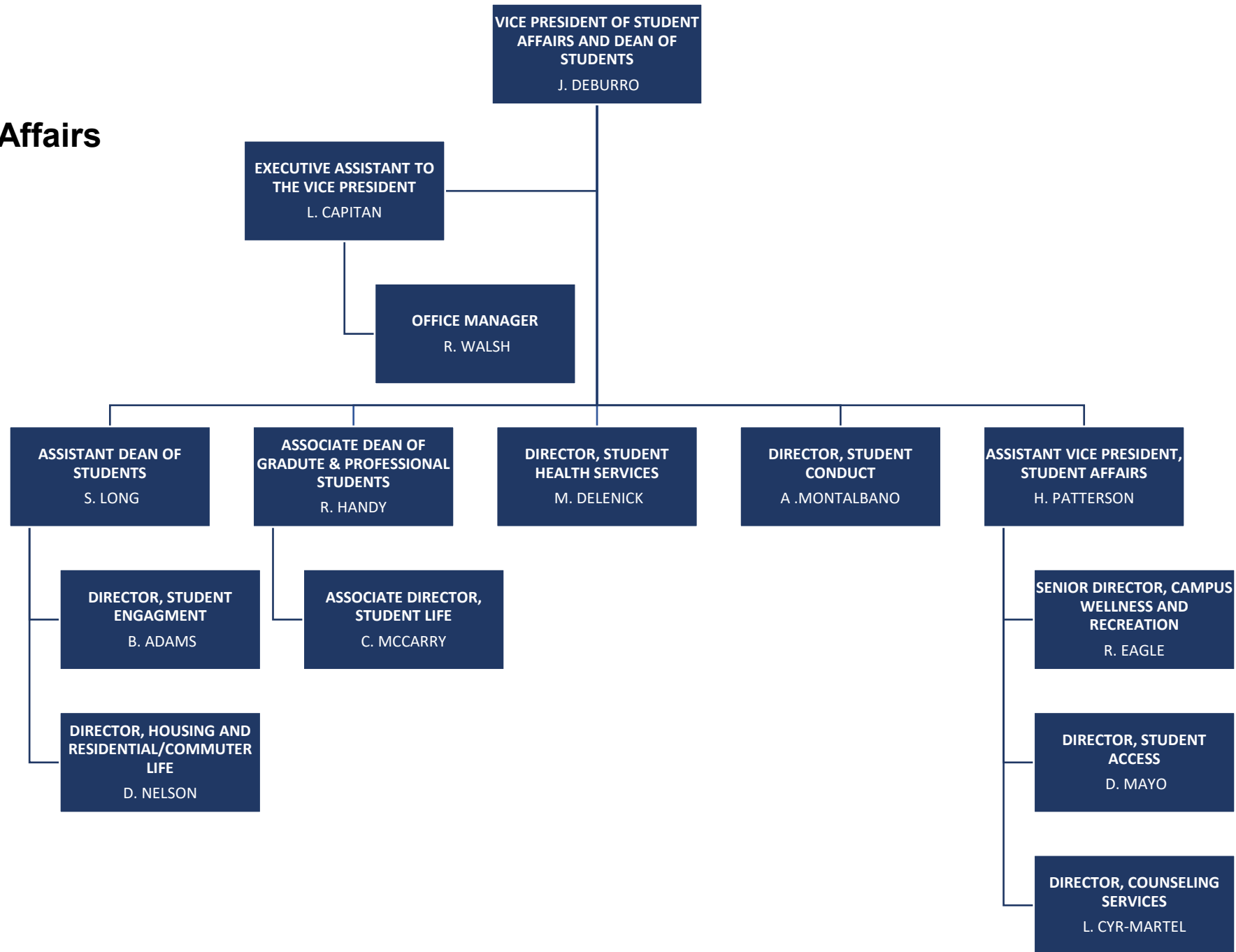
College of Business



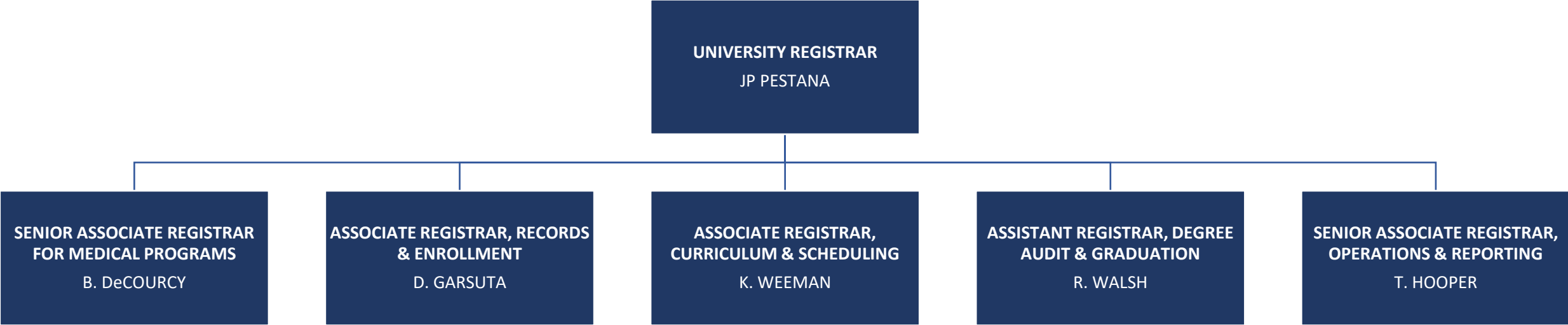
Student Success



Student Affairs



University Registrar



Office of Admissions and Marketing

VICE PRESIDENT,
ADMISSIONS & MARKETING
M. HALEY

ADMINISTRATION
OPERATIONS MANAGER
H. BABBITT

SENIOR DIRECTOR,
UNDERGRADUATE
ADMISSIONS
M. LICHTEN

SENIOR DIRECTOR,
GRADUATE ADMISSIONS
VACANT

SENIOR DIRECTOR,
CREATIVE & BRAND
STRATEGY
M. MILLER

SENIOR DIRECTOR,
MARKETING
A. MULLEN

SENIOR DIRECTOR, DIGITAL
STRATEGY
K. LIBBY

SENIOR DIRECTOR,
ANALYTICS & OPERATIONS
J. TOONE

DIRECTOR, FIRST-YEAR
ADMISSIONS
VACANT

DIRECTOR, TRANSFER
ADMISSIONS
P. HEELEY

ASSOCIATE DIRECTOR,
GRADUATE RECRUITMENT
E. MURPHY

ASSOCIATE DIRECTOR,
GRADUATE ADMISSIONS
C. TRIPP

VIDEO CONTENT PRODUCER
D. LAMBERT

MARKETING COPYWRITER
C. CARTER

SENIOR WEBSITE
ADMINSTRATOR
A. FORRISTALL-ST. MICHEL

DIRECTOR OF ADMISSIONS
SYSTEMS (UNDERGRAD)
C. CHILDS

SENIOR ASSISTANT
DIRECTOR,
UNDERGRADUATE
ADMISSIONS
D. VIVIAN

ASSISTANT DIRECTOR,
GRADUATE ADMISSIONS
L. NOYES

SENIOR DIGITAL DESIGNER
J. KRUZEL

MARKETING MANAGER
N. VAIL

SOCIAL MEDIA SPECIALIST
C. STOVER

DIRECTOR, ADMISSIONS
SYSTEMS (GRADUATE)
A. LESTER

SENIOR ASSISTANT
DIRECTOR,
UNDERGRADUATE
ADMISSIONS
E. WERMENCHUCK

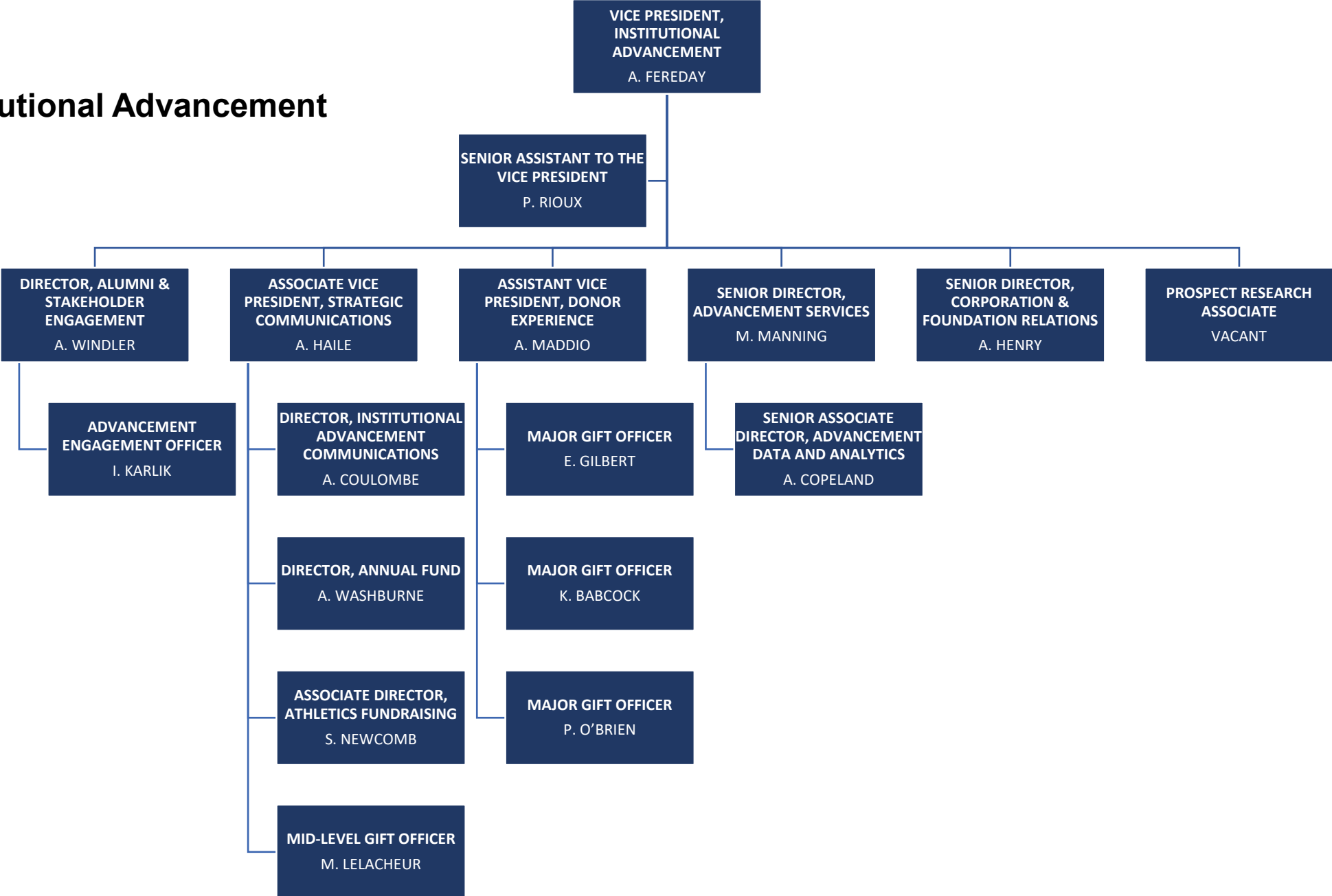
SENIOR GRAPHIC DESIGNER
M. GRAMMER

MARKETING MANAGER
J. SOLOWAY

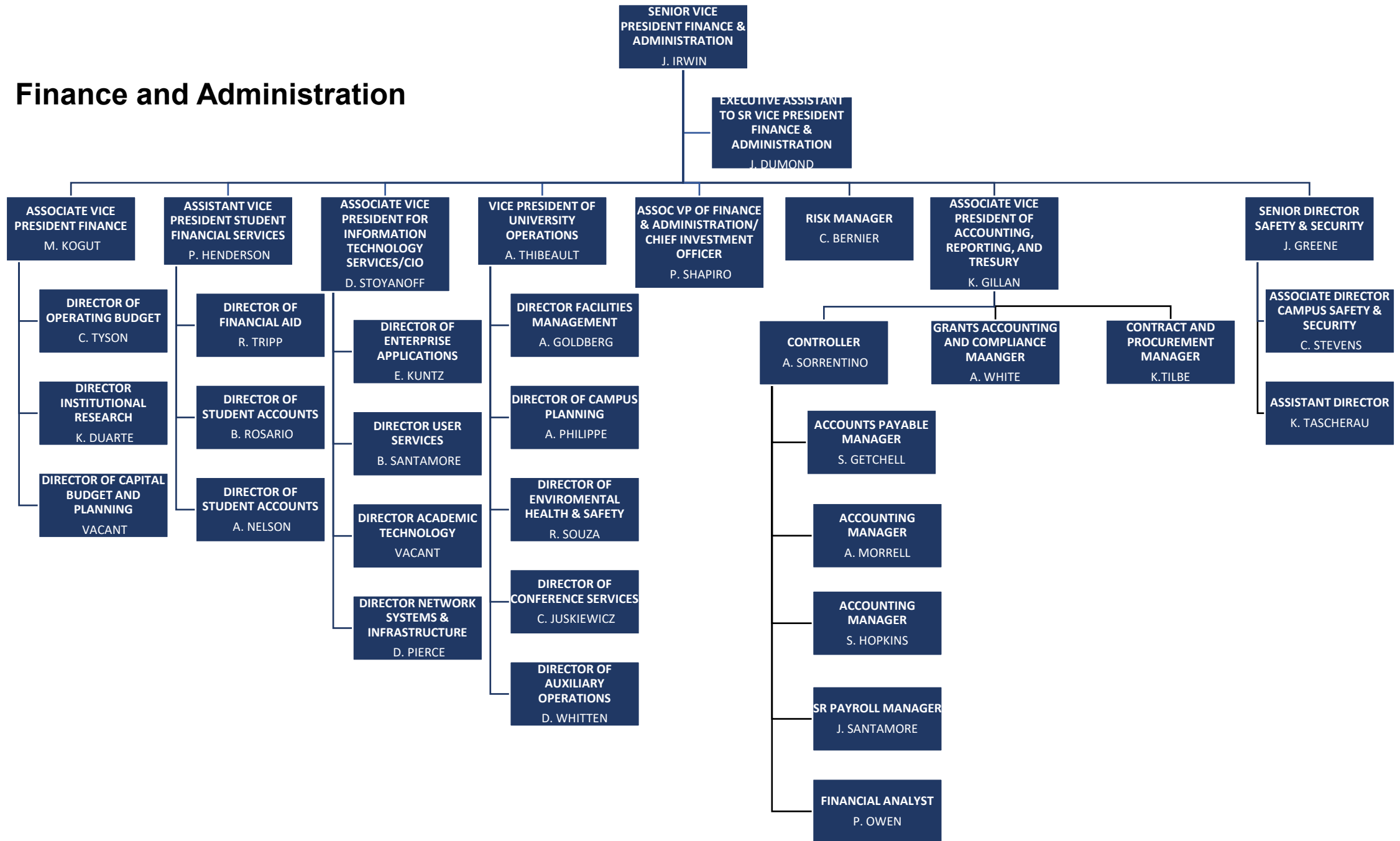
ASSOCIATE DIRECTOR,
ADMISSIONS ANALYTICS
VACANT

ASSISTANT DIRECTOR,
UNDERGRADUATE
ADMISSIONS
I. WALTER

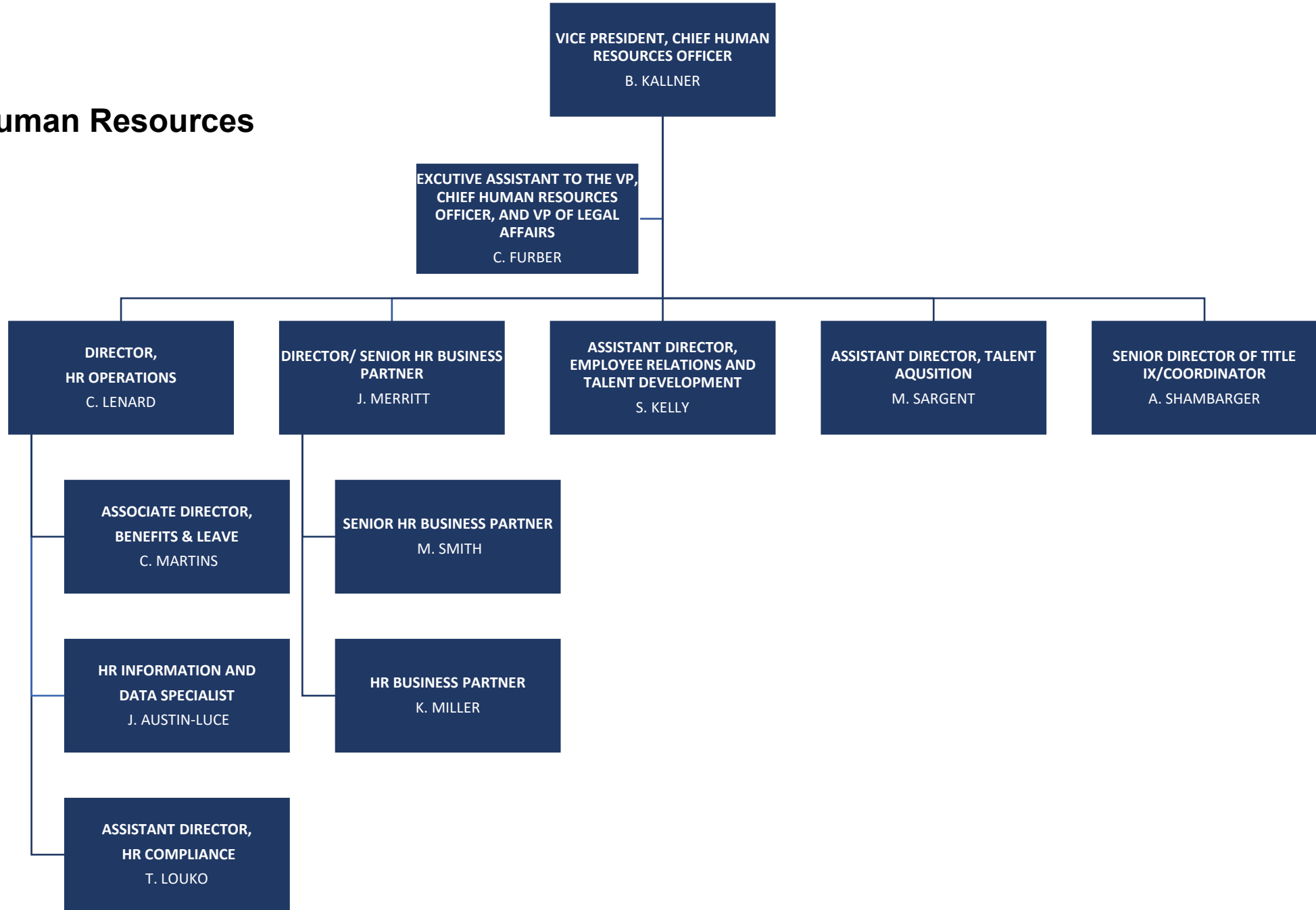
Institutional Advancement



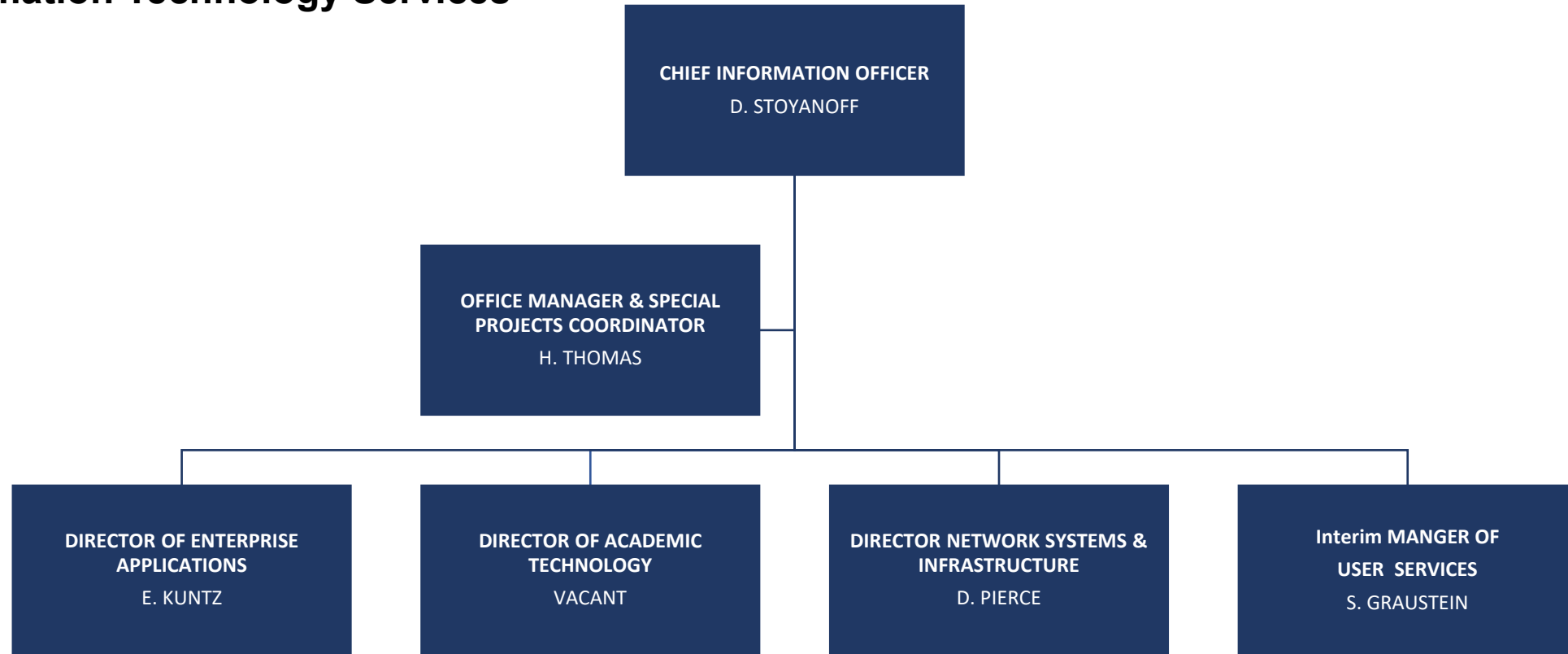
Finance and Administration



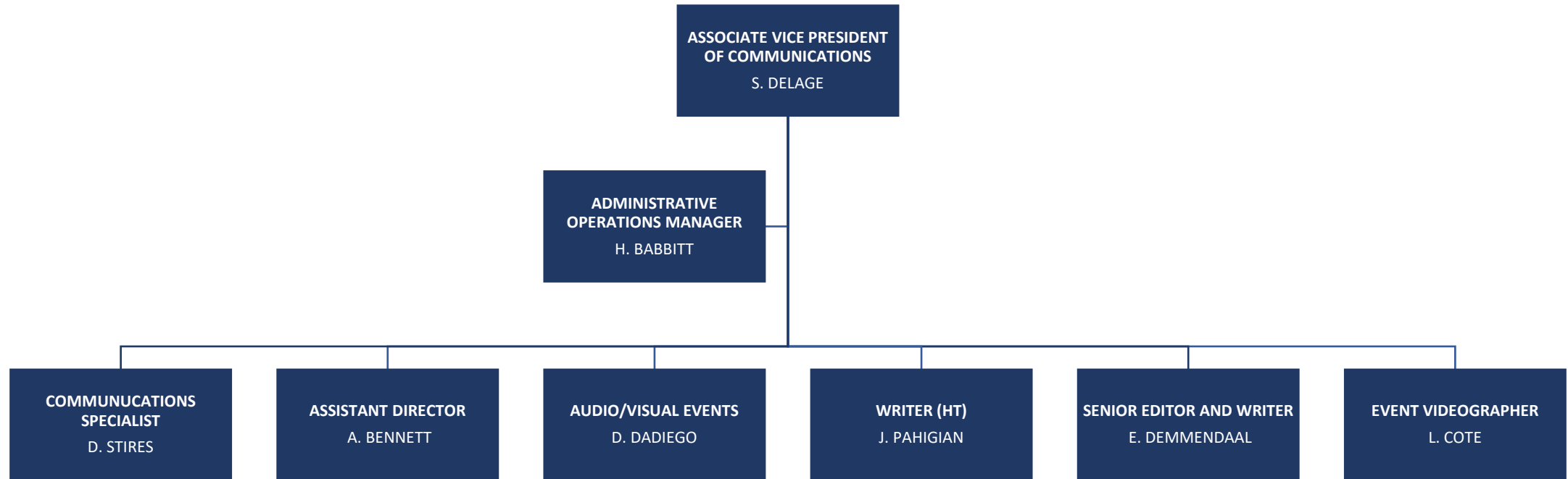
Human Resources



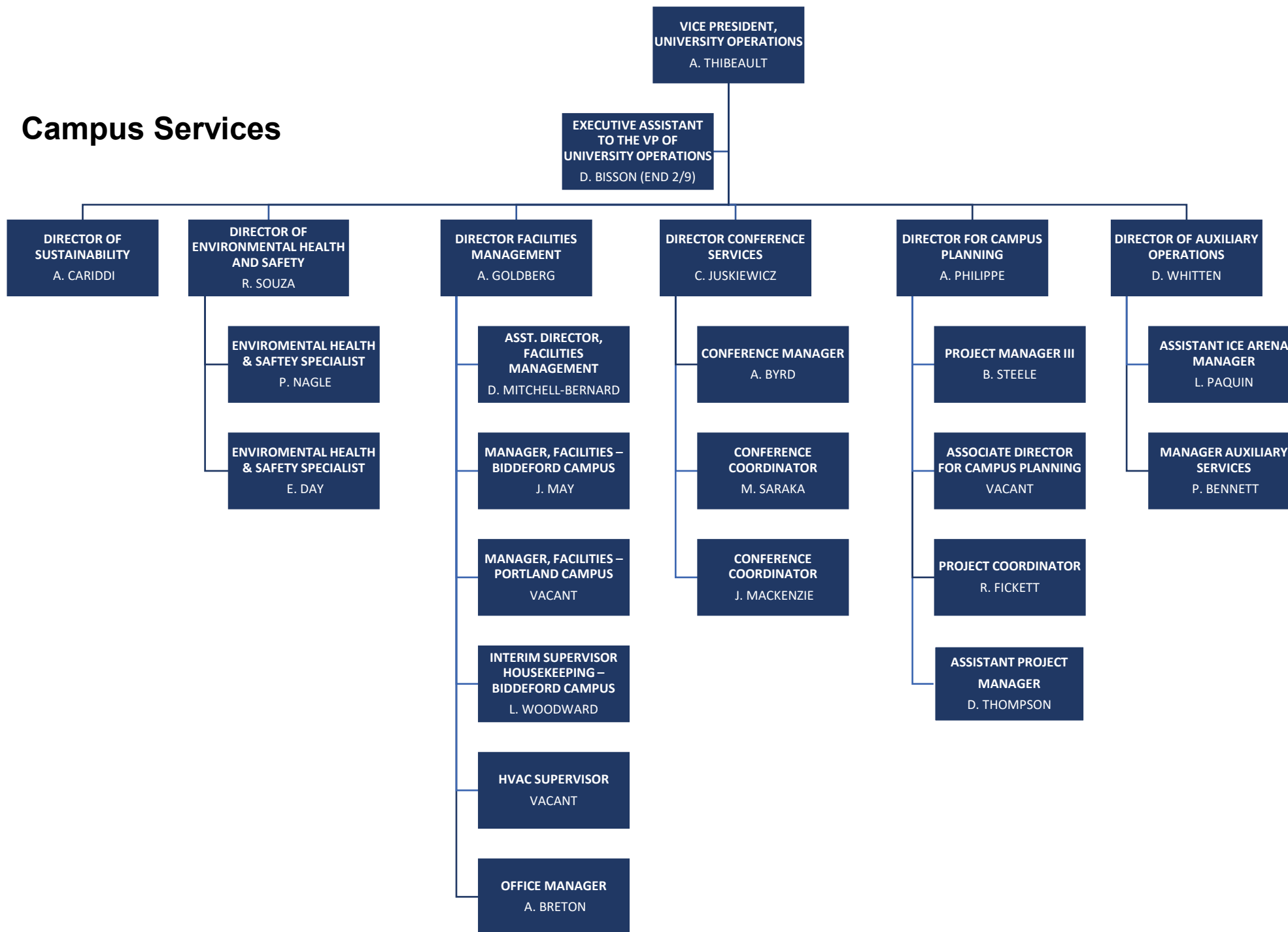
Information Technology Services



Communications



Campus Services



Athletics

