

KNOW YOUR COFFEE

Fair Trade:

grown by farmers who are members of a democratically run co-op, receive fair prices for their beans, and put money into the community.

Bird-friendly:

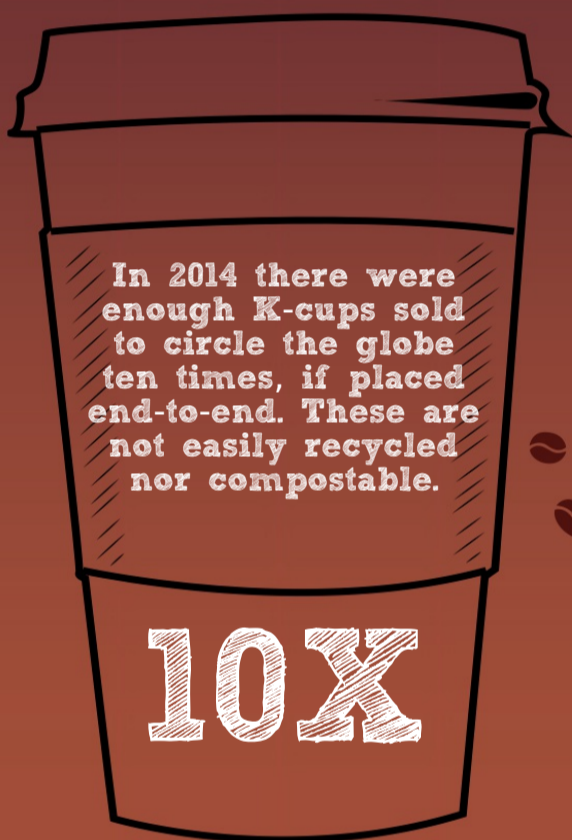
a further emphasis on shade grown coffee by outlining the benefits of native wildlife, including birds.

Organic:

grown or made without the use of artificial chemicals.

Shade-grown:

coffee grown beneath a forest canopy in order to promote biodiversity in the region.



Many UNE departments offer coffee to their employees

Single serve, one-time use Keurig coffee makers are the least sustainable option for brewing.

Purchasing a reusable Keurig coffee filter "my K-cup", is a better choice. That way you can refill it with coffee that has more sustainable roots, such as fair trade, organic, shade-grown or bird-friendly.



Here's How!

Several UNE departments have partnered with Blue Reserve to offer compostable coffee pods in their single-serve brewers

Blue Reserve